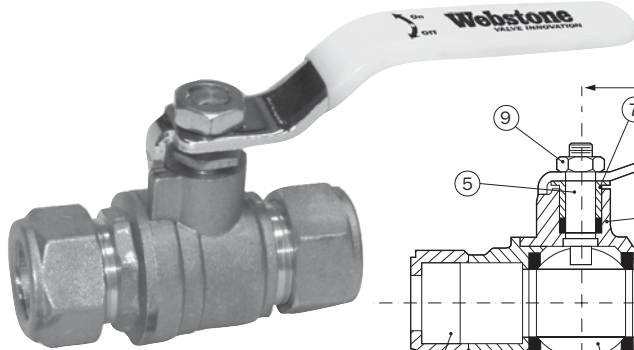


# Full Port Forged Brass Ball Valves

w/ Compression Ends

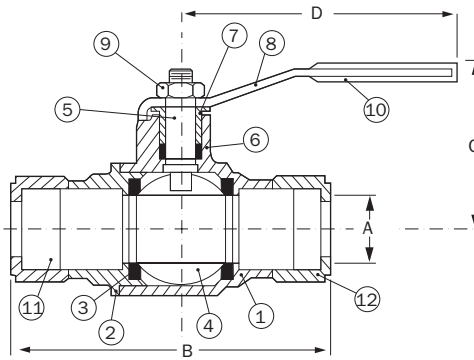
**600 WOG / 150 WSP**  
**ISO 9001**

## 4063 Series - Compression x Compression



TEMP °F	PSI
100	600
150	490
200	470
250	439
300	411
350	294
366	N/A

NO.	DESCRIPTION	MATERIAL
1	BODY	BRASS
2	END CAP	BRASS
3	SEAT	PTFE
4	BALL	BRASS HCP
5	STEM	BRASS
6	STEM SEAL	PTFE
7	PACKING GLAND	BRASS
8	HANDLE	STEEL CP
9	HANDLE NUT	STEEL CP
10	HANDLE JACKET	VINYL
11	FERRULE	BRASS
12	COMPRESSION NUT	BRASS



Specifications: Designed for residential, commercial or industrial use with water, oil or gas. This approved Webstone valve is actuated by a blowout proof stem and features an adjustable packing gland.

### 4063 Series - Compression x Compression

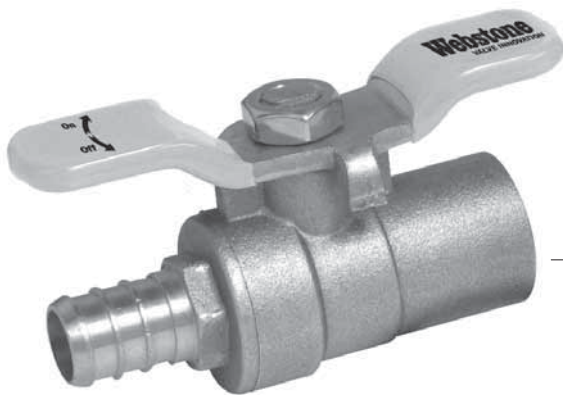
ITEM #	SIZE	CTN/CASE	A	B	C	D	C <sub>v</sub>
40632	1/2"	25/100	1/2	2 15/16	2	3 1/2	11.5
40633	3/4"	15/60	3/4	3 3/16	2 3/16	3 3/4	27.1
40634	1"	10/40	1	4 1/8	2 5/8	4 5/8	49.3

# Forged Brass Ball Valves

w/ Wing Handle

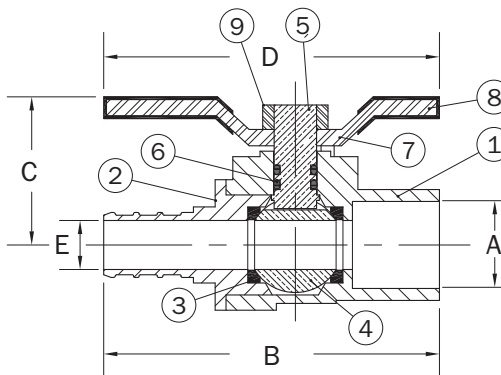
**160 WOG**

## 50682 - SWT x PEX



TEMP °F	PSI
73.4	160
180	100
200	80

NO.	DESCRIPTION	MATERIAL
1	BODY	BRASS
2	END CAP	BRASS
3	SEAT	PTFE
4	BALL	BRASS HCP
5	STEM	BRASS
6	STEM SEAL	RUBBER
7	HANDLE	STEEL CP
8	HANDLE JACKET	VINYL
9	HANDLE NUT	STEEL CP



Specifications: Designed for residential, commercial or industrial use with water, oil or gas. This approved Webstone valve is actuated by a blowout proof stem. Solder joint temperature ratings are per ASME B16.18 Annex A for 95-5 solder. Other solder materials have lower pressure/temperature limits. Do not silver braze or overheat valves when soldering.

### 50682 - SWT x PEX

ITEM #	SIZE	CTN/CASE	A	B	C	D	E
50682	1/2"	10/100	1/2	2 3/8	1 11/16	2 3/8	3/8

### THIS SPACE FOR DESIGNER / ENGINEER APPROVAL

Job/Customer _____	Date _____	Contractor _____
Model Specified _____	Qty _____	Approved By _____
Designer/Engineer _____	Date _____	Contractor's PO# _____
Submitted by _____	Date _____	Other _____